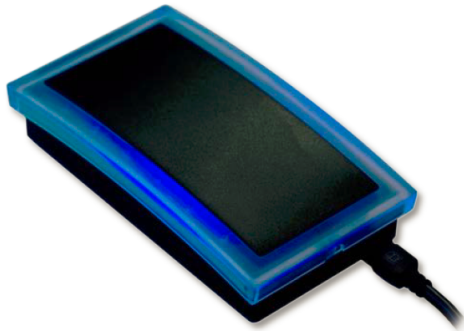




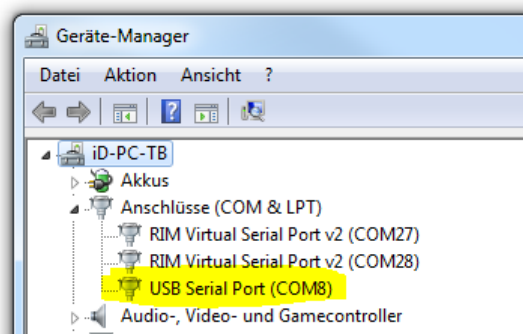
Quickstartguide for iDTRONIC LF RFID Readers



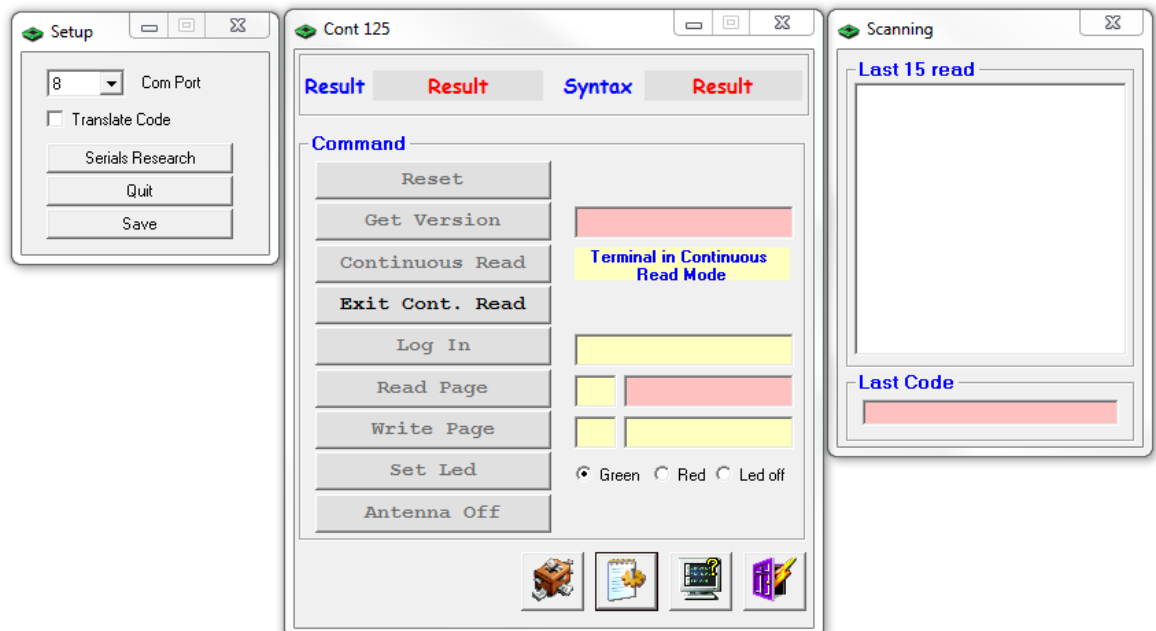
Installation LF-Version

Please refer to this installation guide to start both software and reader successfully.

1. Download the appropriate software from: <http://idtronic-rfid.com/de/support/sdks/>
2. Unpack the zip folder to a folder of your choice.
3. Open the folder “**Card Reader LF SDK_NOV14**”, and then open the folder “**General SDK**”, then open the folder “**Demo Software**”.
4. Connect the reader to USB-Port of your computer.
5. Check in the Windows Device Manager if the driver for the USB-Port is installed.
If it is not installed, then click on this driverless port and select update driver-software, please use the driver from the folder “**USB-Drivers**”.



6. Start the file “**setup.exe**” and follow the installation procedure.
7. After successful installation, start the software at menu item “**Cont 125**” in programmes.
8. Select the appropriate Com-Port and click the “**Save**” button.
If you don't know the port you can also proceed with menu item “**Serial Research**”.



9. Now you can proceed to read and write tags.

If you want to use the KEMU function, then open the folder “**Keyboard Emulations for Windows**” and start the file “**setup.exe**”, after installation the KEMU function is ready.